

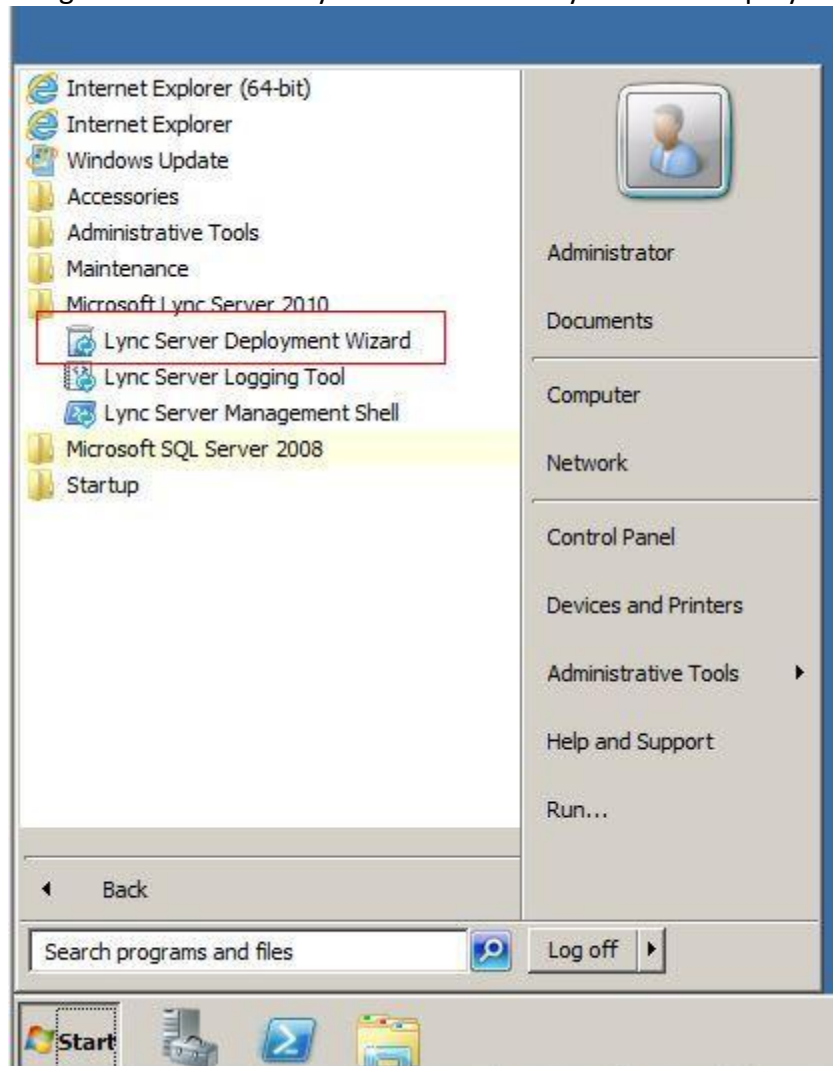
Generate A CSR On Edge Server with Microsoft Lync 2013 Server:

Note:

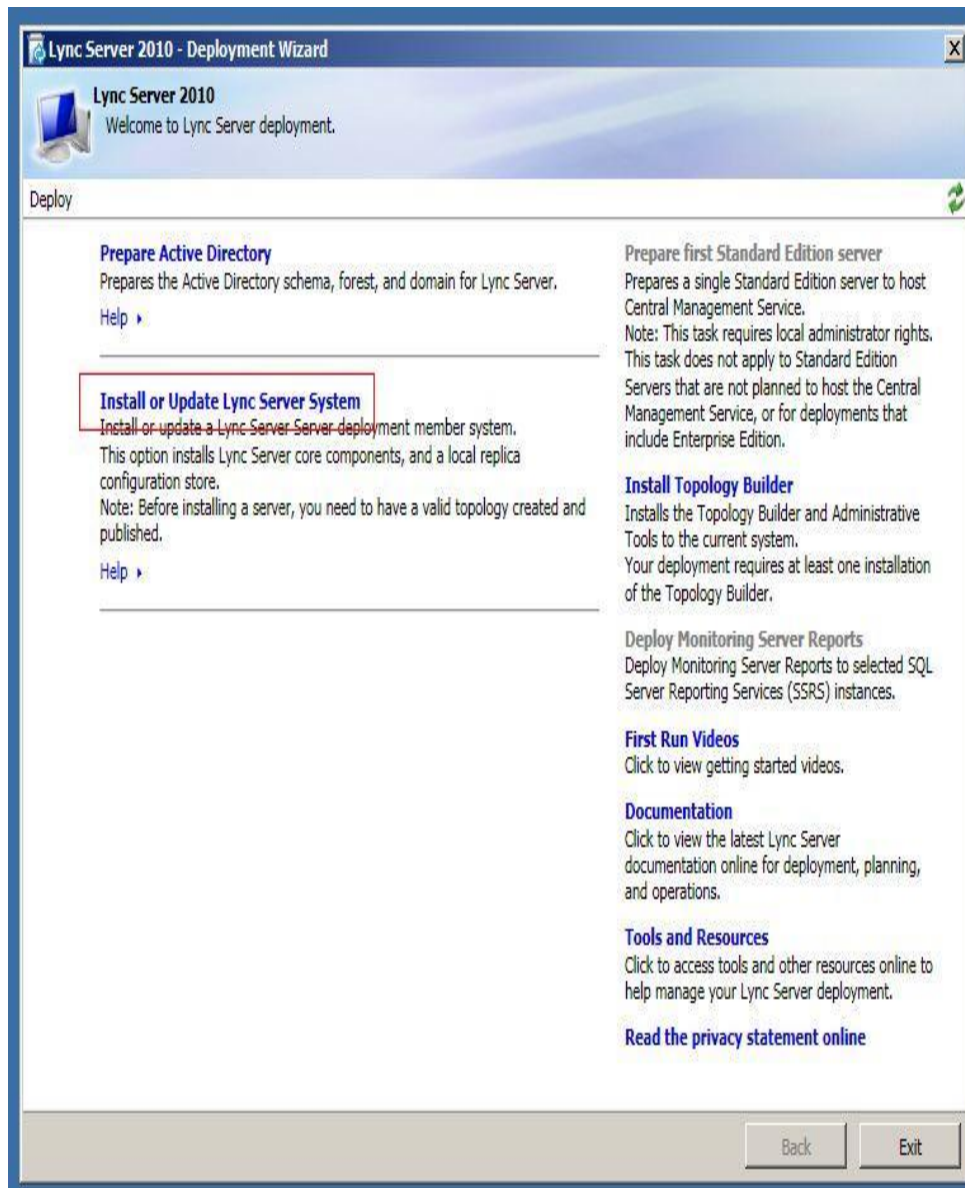
- If you require an SSL certificate to secure a domain hosted in an Edge Server, you must first generate a Certificate Signing Request (CSR).
- Do not use commas in any of the fields when creating your Certificate Signing Request (CSR). Commas are interpreted as the end of the field and will cause an invalid CSR to be generated.
- Do not use any of the following characters in the Web server Distinguished Name: ! @ # \$ % ^ * () ~ ? > < & / \

Steps To Generate A New CSR:

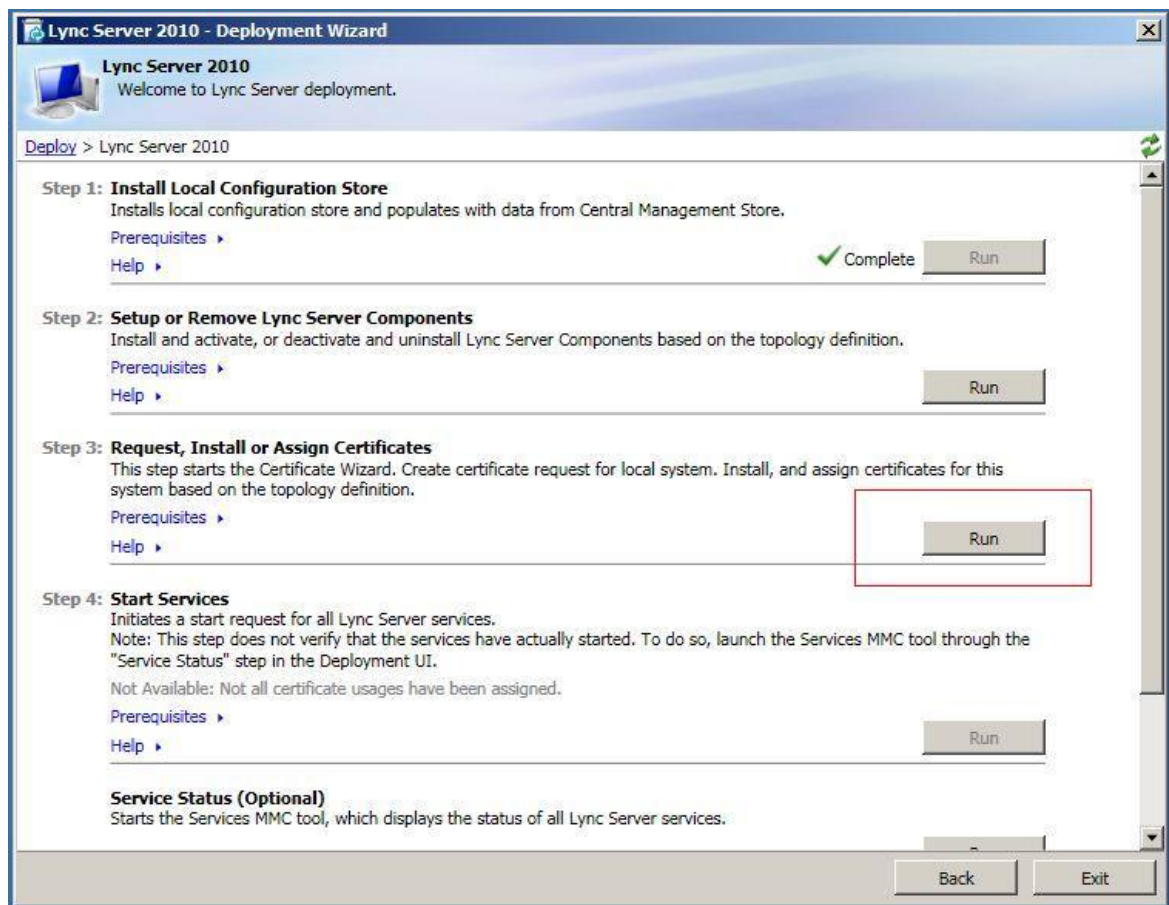
1. Start > All Programs > Microsoft Lync Server 2010 > Lync Server Deployment Wizard



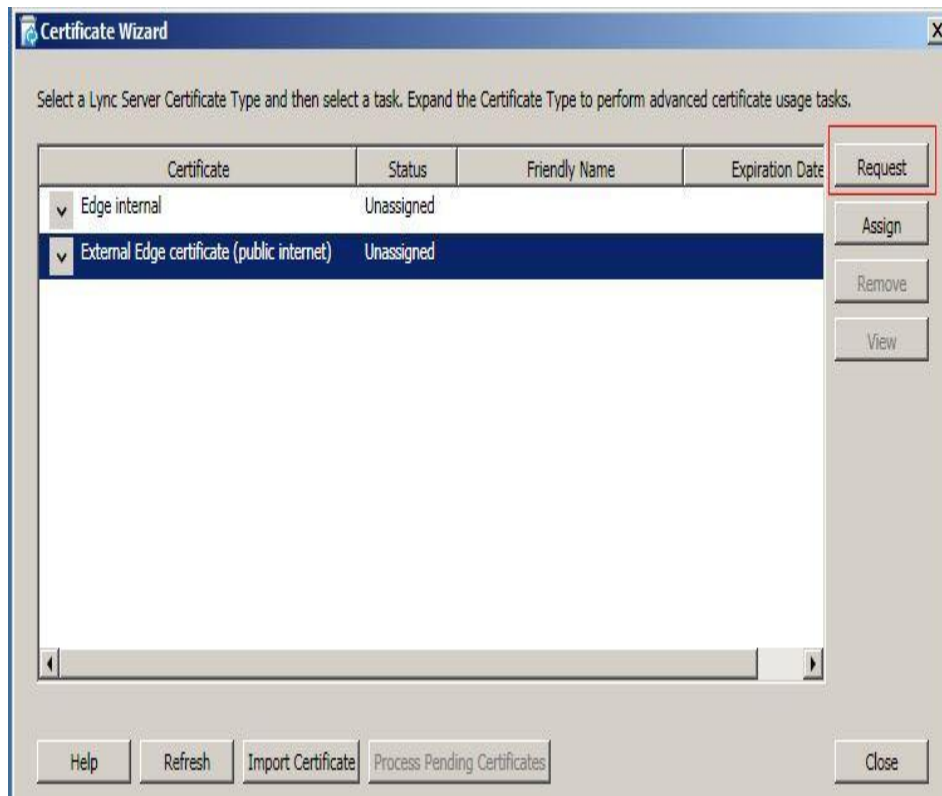
2. Select Install or Update Lync Server System



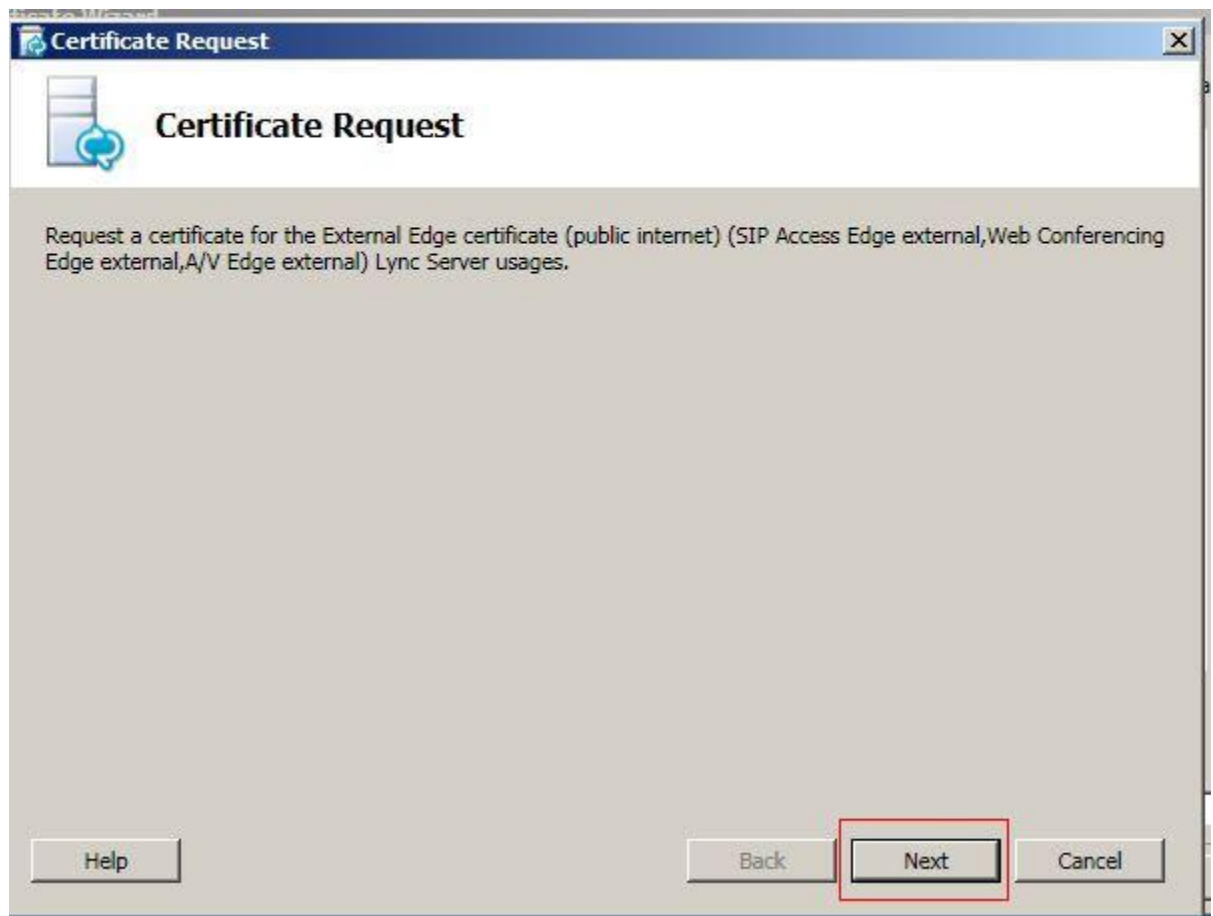
3. Click Run button on step 3 Request, Install or Assign Certificates



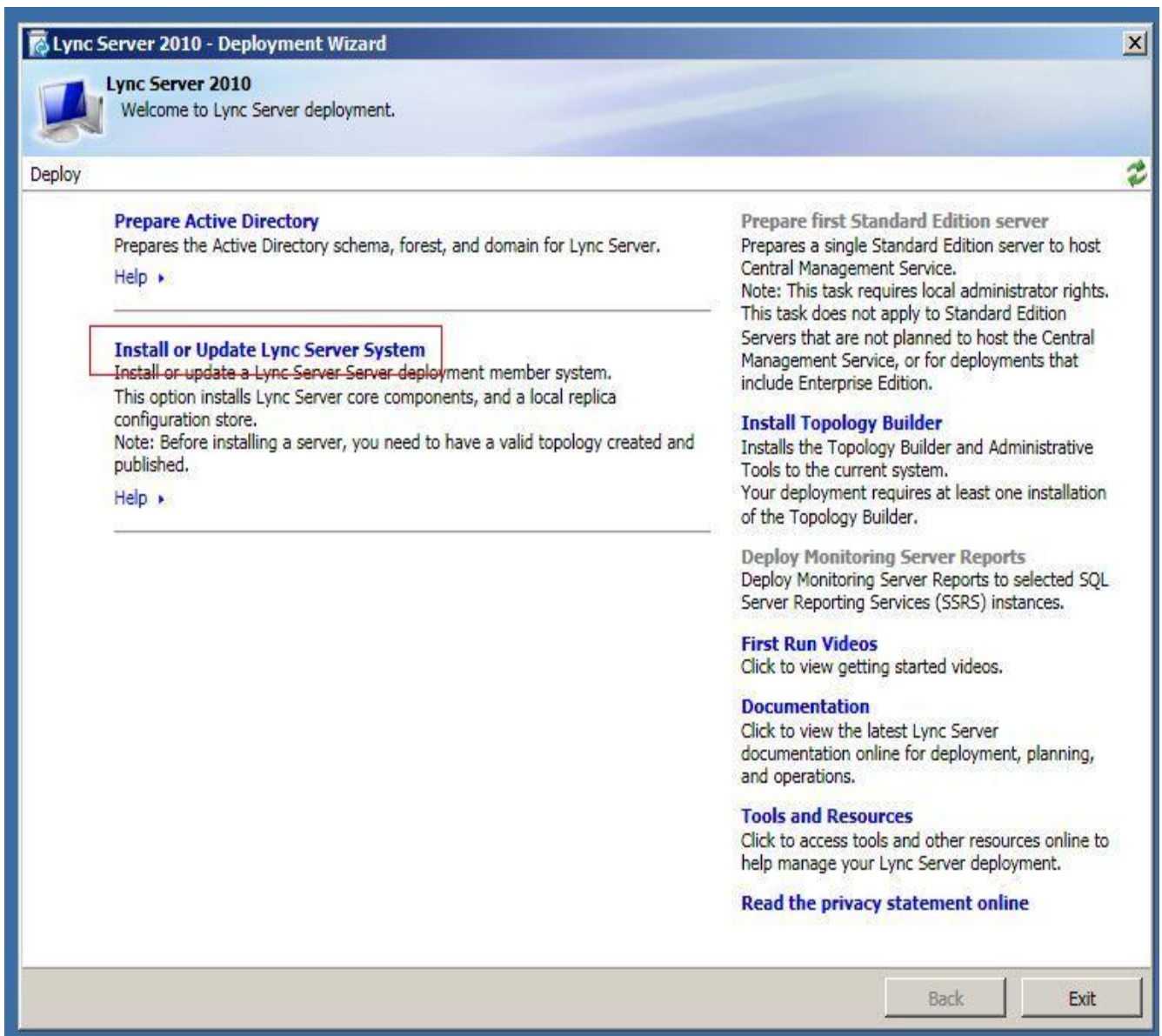
4. Select External Edge Certificate and click Request button



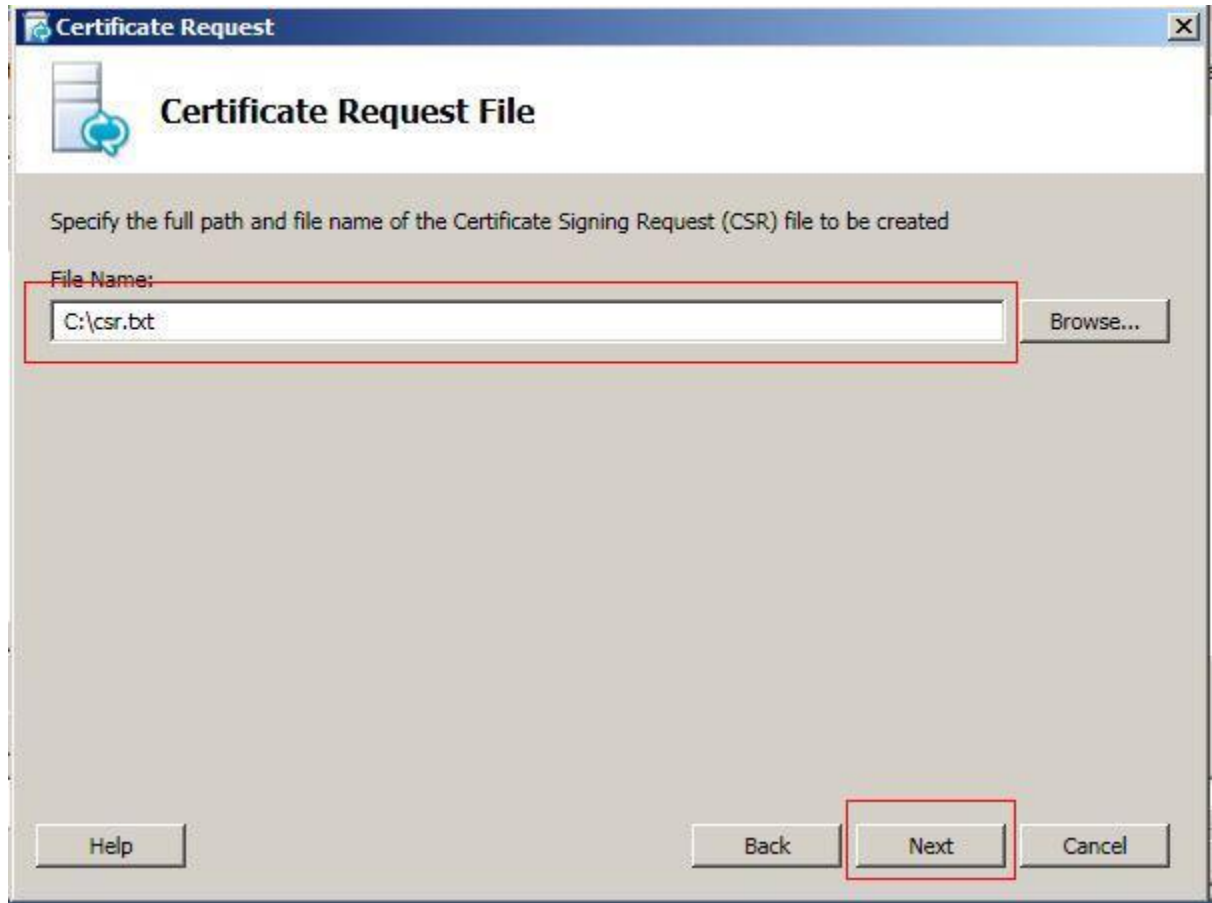
5. On certificate request window click next



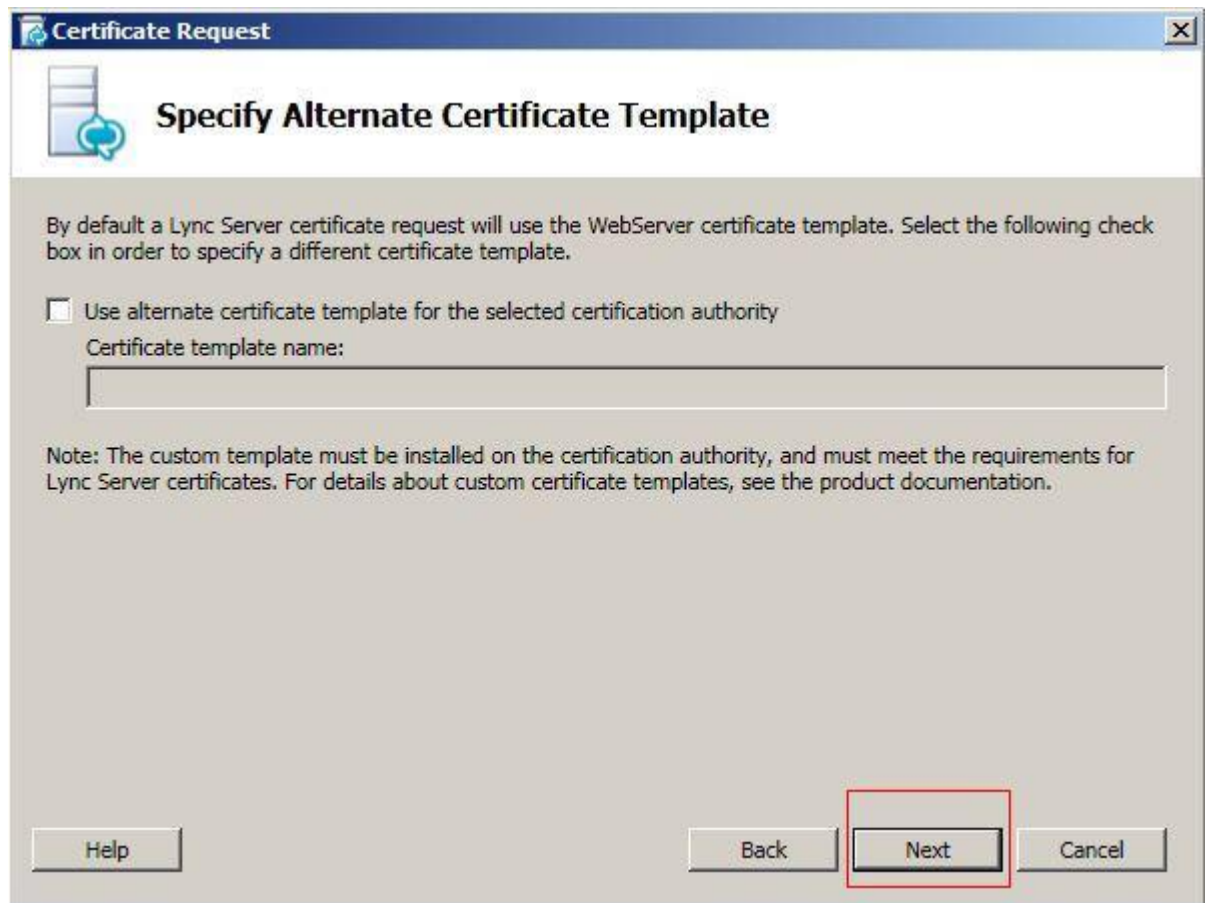
6. Make sure the selection option is on Prepare the request now, but send it later. Click Next.




7. Give the name and place the location where you want to save your certificate signing request file. E.g.: c:\csr.txt



8. Click Next button on Specify Alternate Certificate Template window.



9. On Name and Security Settings window, enter your Friendly Name. e.g.: My Edge Server and make sure the bit length is 2048. Click Next to continue.



Certificate Request

Name and Security Settings

Type a name for the new certificate. The name should be easy for you to refer to and remember.

Note: The friendly name should not be confused with the Subject Name which will be determined automatically based on the certificate's usages on this machine.

Friendly Name:
My Edge Server

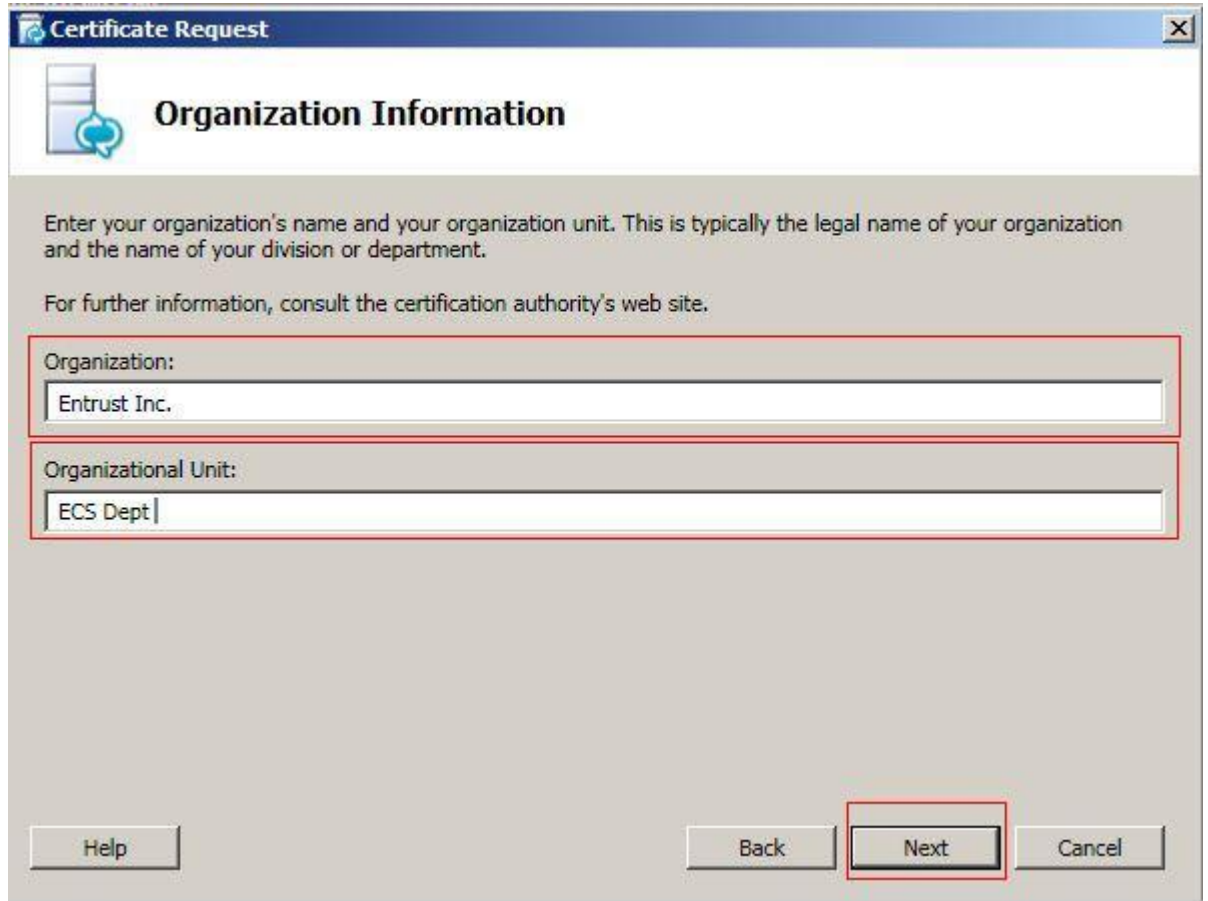
Bit length:
2048

Mark the certificate's private key as exportable

Note: If there are multiple machines in the edge cluster you must obtain an exportable certificate and install the same certificate on all the machines in the cluster

Help Back **Next** Cancel

10. On Organization information window, type in your Organization and Organization Unit then click Next



Certificate Request

Organization Information

Enter your organization's name and your organization unit. This is typically the legal name of your organization and the name of your division or department.

For further information, consult the certification authority's web site.

Organization:
Entrust Inc.

Organizational Unit:
ECS Dept

Help Back **Next** Cancel

11. On Geographical Information, please enter your Country, State and City. Click next to continue.

Certificate Request

Geographical Information

Country/Region:
Canada

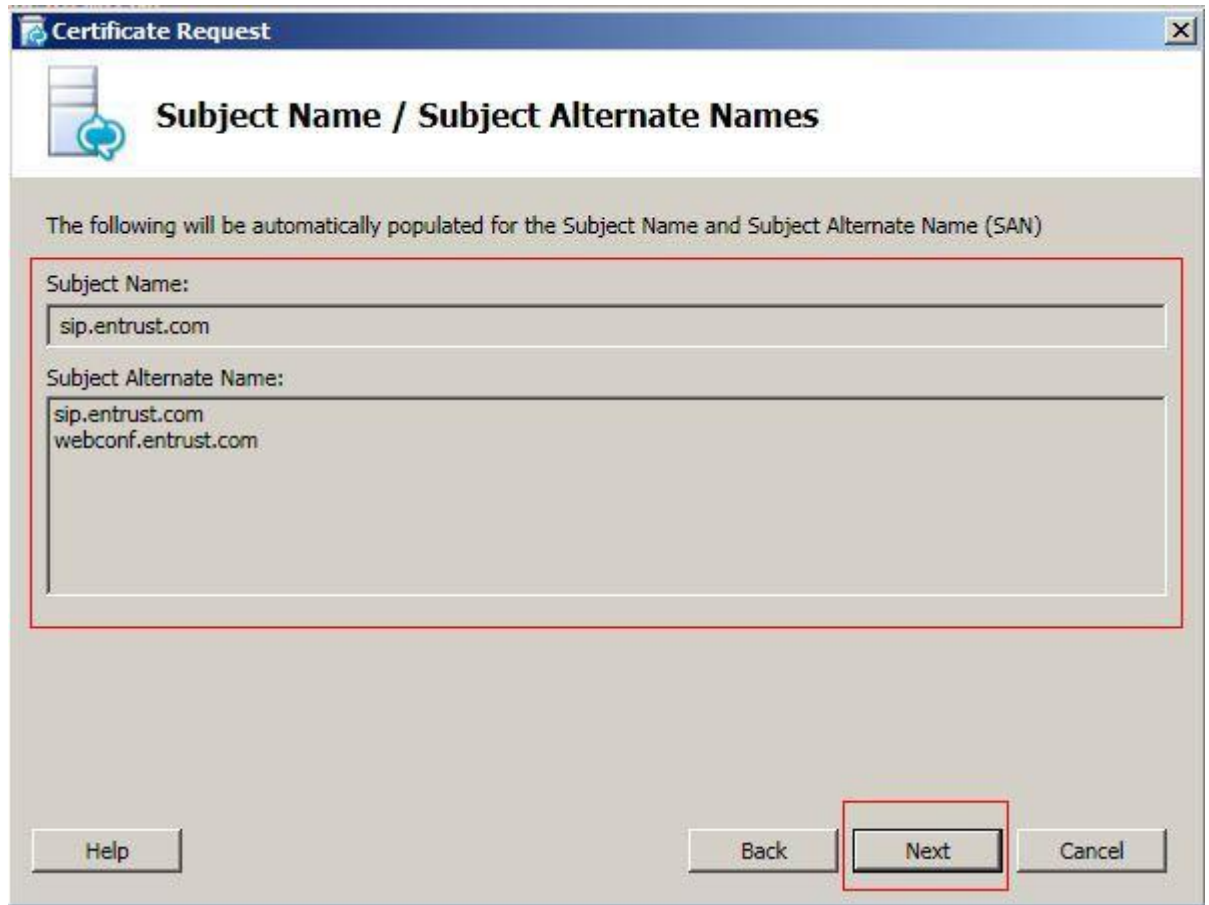
State/Province:
Ontario

City/Locality:
Ottawa

State/Province and City/Locality must be completed. Official names cannot contain abbreviations.

Help Back **Next** Cancel

12. On Subject Name/Subject Alternate Name window, all the subject alternate names will auto populate. Click next to continue.



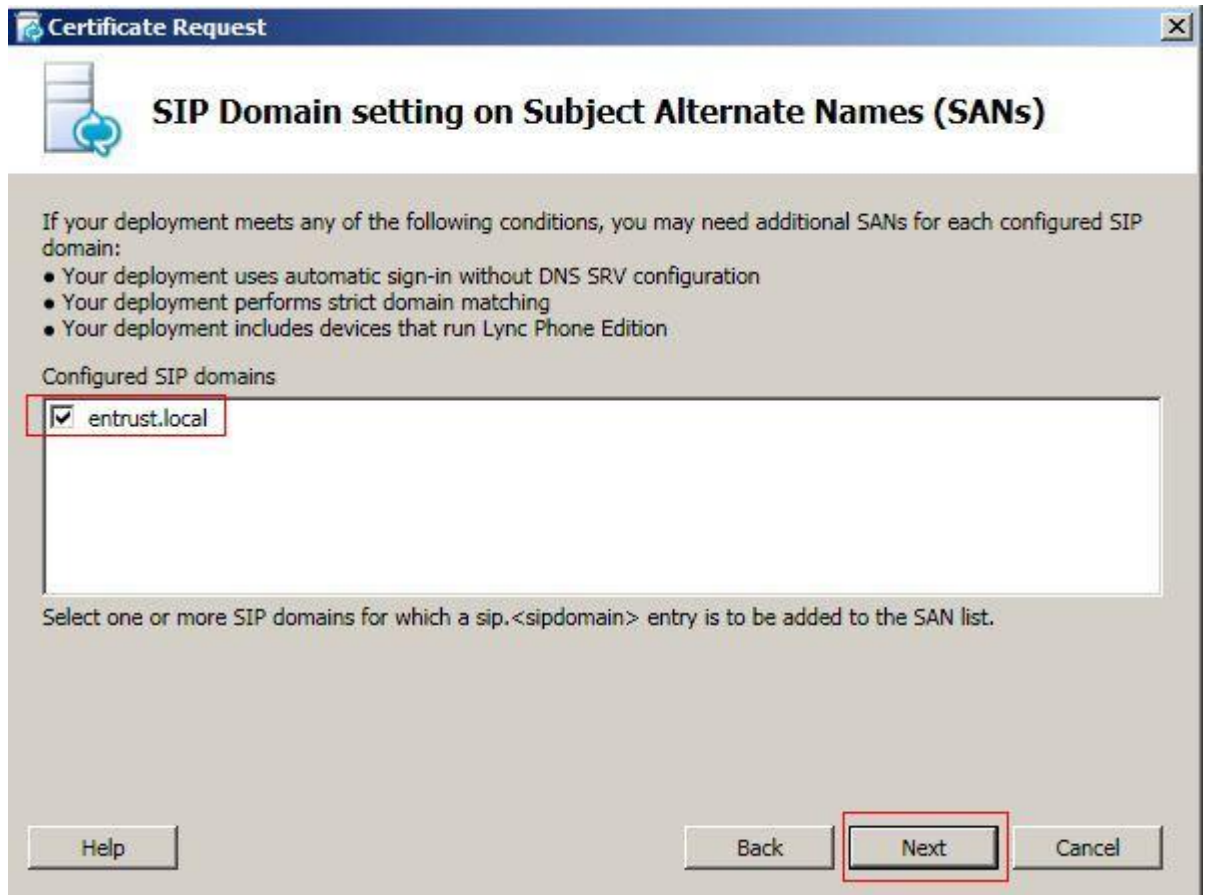
The screenshot shows a Windows-style dialog box titled "Certificate Request" with a close button in the top right corner. The main title of the dialog is "Subject Name / Subject Alternate Names". Below the title, there is a message: "The following will be automatically populated for the Subject Name and Subject Alternate Name (SAN)".

There are two text input fields:

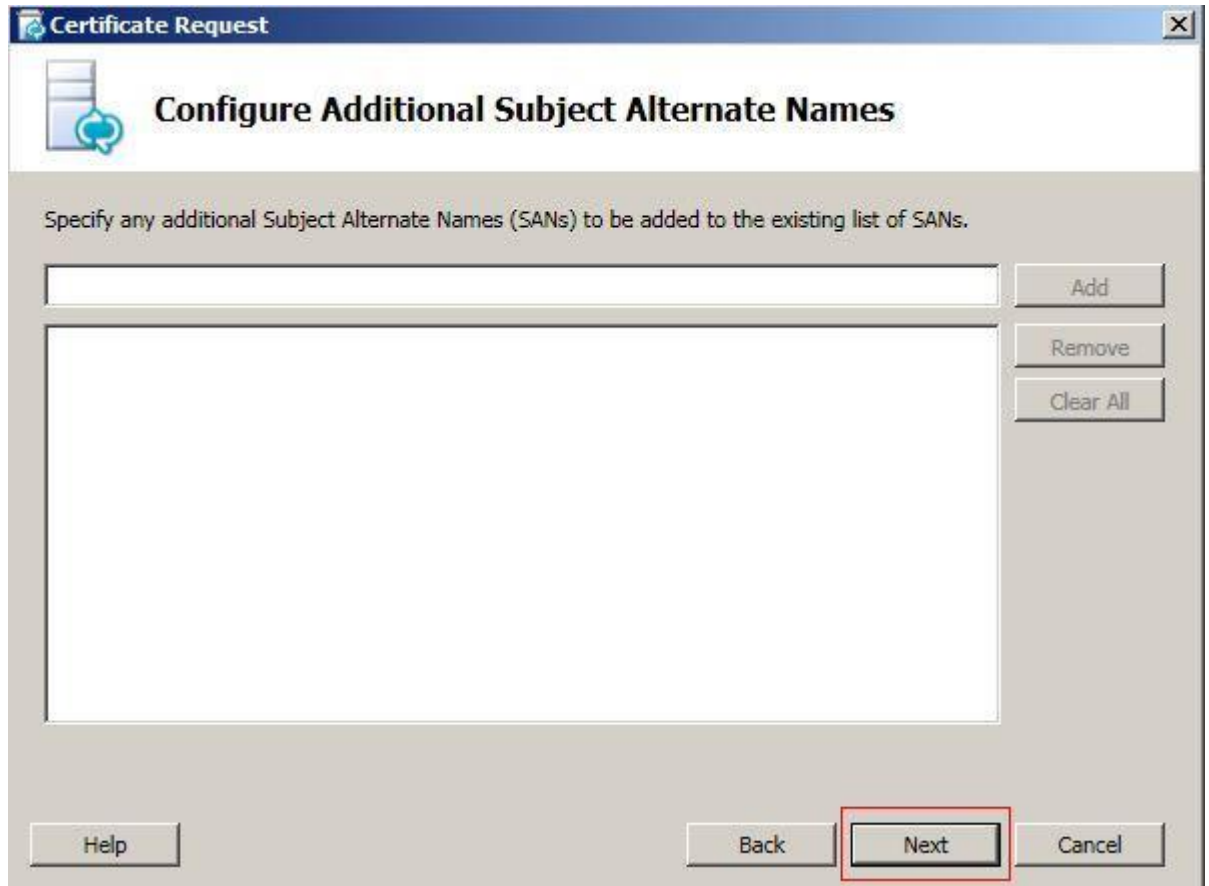
- The first field is labeled "Subject Name:" and contains the text "sip.entrust.com".
- The second field is labeled "Subject Alternate Name:" and contains two lines of text: "sip.entrust.com" and "webconf.entrust.com".

At the bottom of the dialog, there are four buttons: "Help", "Back", "Next", and "Cancel". The "Next" button is highlighted with a red rectangular box.

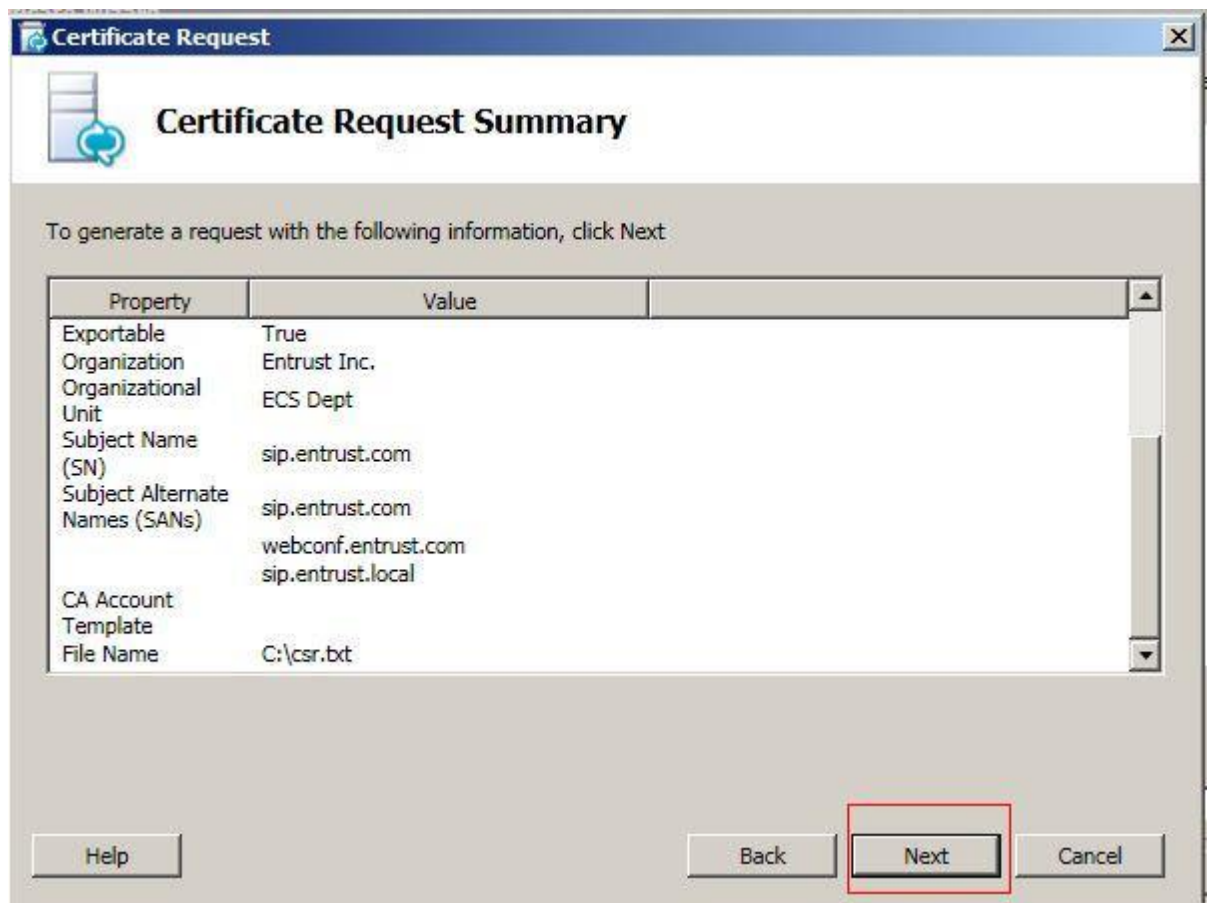
13. On SIP Domain Setting on Subject Alternate Names window, make sure the check box on sip domain being checked. Click next to continue.



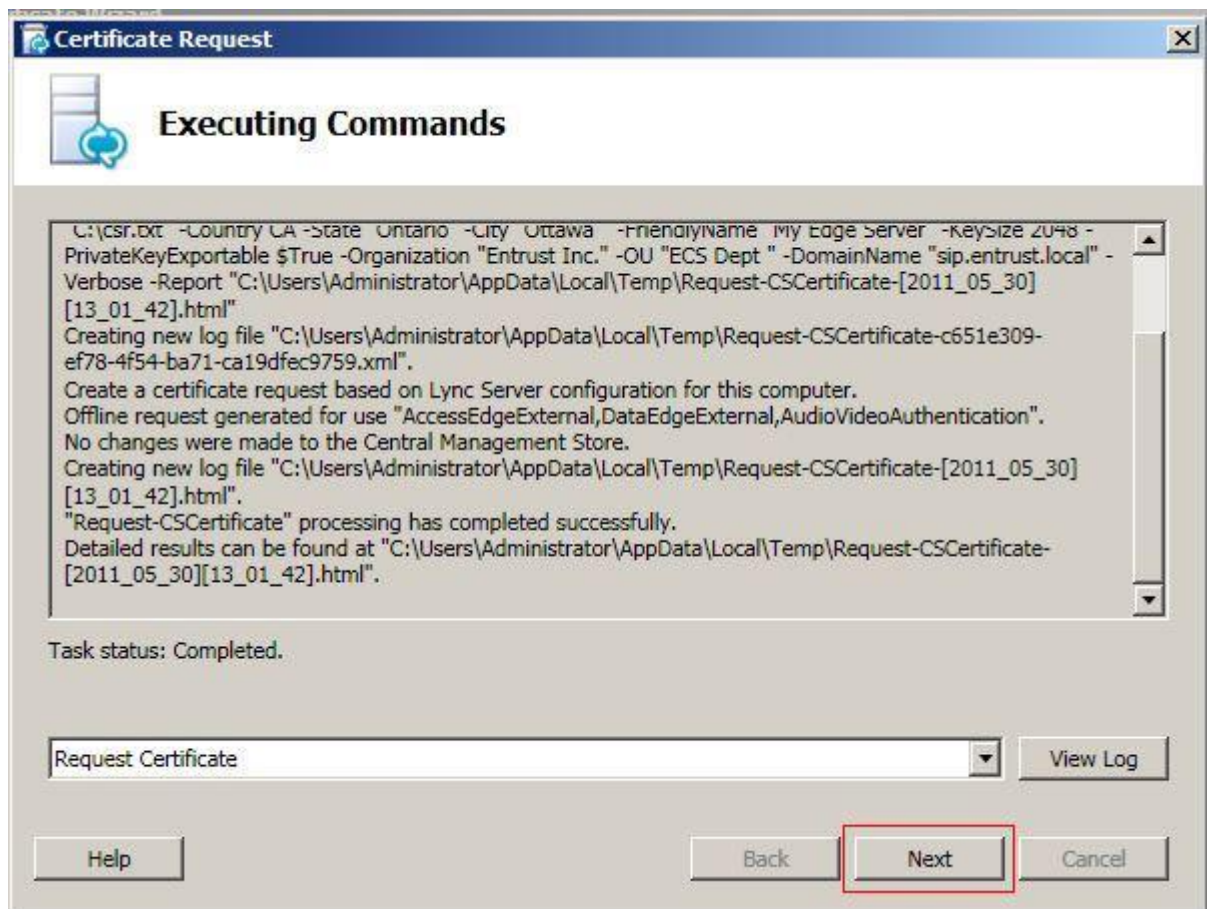
14. On Configure Additional Subject Alternate Names window, you can add any additional SAN if needed and click next to continue



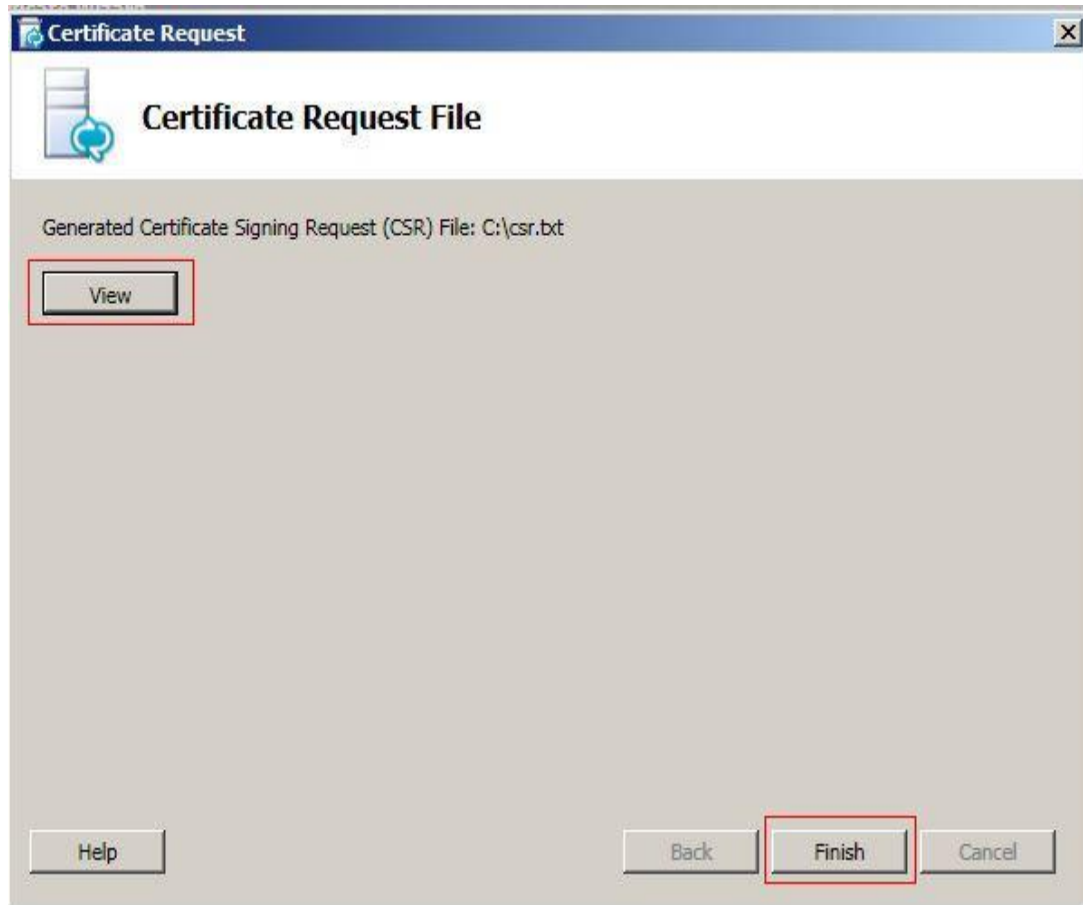
15. On Certificate Request Summary, please review and click next to continue.



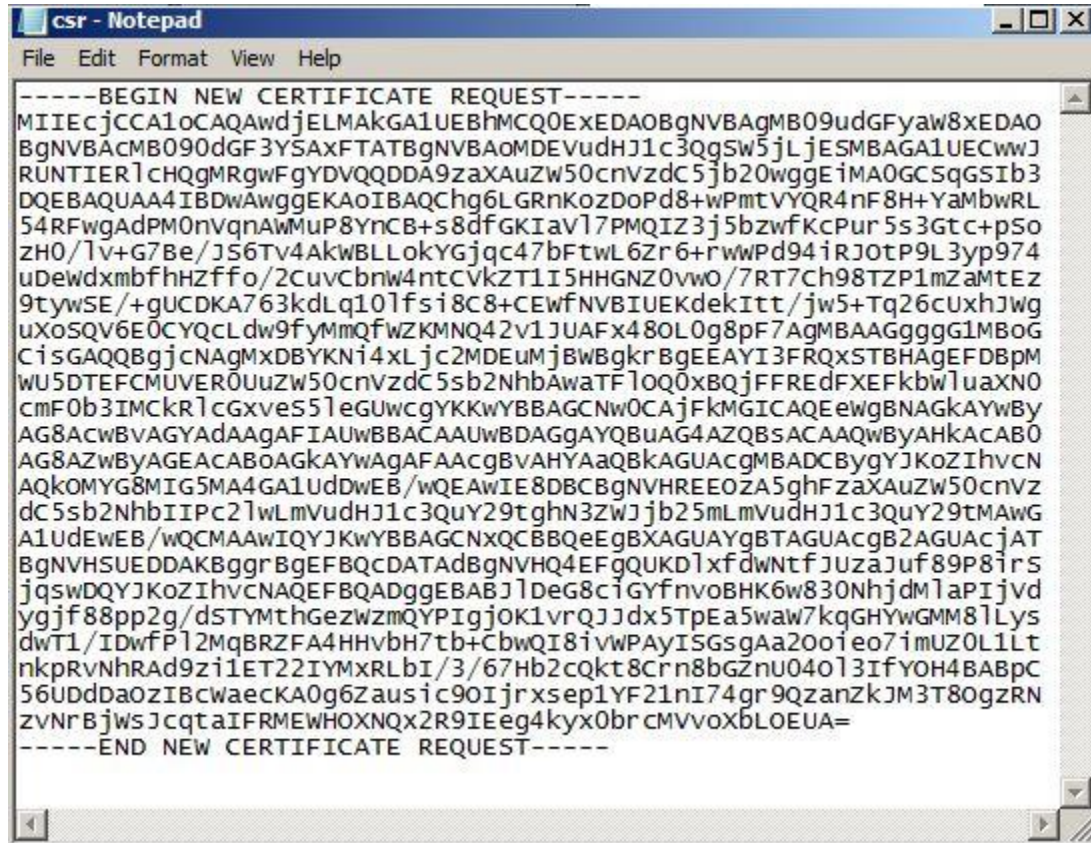
16. Click next on the Executing Command window.



17. Click on the View button to open the CSR file and click Finish button to close the Certificate Request File window. You can also find the file on the allocated folder.



- Copy the entries of CSR file and paste it to the online order screen on Entrust website or CMS.



```
-----BEGIN NEW CERTIFICATE REQUEST-----
MIIEcjCCA1oCAQAwdjELMAKGA1UEBhMCQ0EXEDA0BgNVBAGMB09udGFyaw8xEDAO
BgNVBACMB090dGF3YSAXFTATBgNVBAoMDEVudHJ1c3QgSw5jLjESMBAGA1UECwwJ
RUNTIERlCHQGMrgwFgYDVQDDA9zaXAUZw50cnVzdC5jb20wggEiMA0GCSqGSIb3
DQEBAQUAA4IBDwAwggEKAoIBAQCg6LGRnKozDoPd8+wPmtVYQR4nF8H+YaMbwRL
54RFwgAdPM0nvqnaWmuP8YnCB+s8dfGKIav17PMQIZ3j5bzwfKcPur5s3Gtc+pSo
ZH0/1v+G7Be/JS6Tv4AkWBLLokYGjqc47bftwL6Zr6+rwwPd94iRJotP9L3yp974
uDewdxmbfhHZffo/2CuvCbrw4ntCVkZT1I5HHGNZ0vwo/7RT7Ch98TZP1mZaMtEz
9tywSE/+gUCDKA763kdLq101fsi8C8+CEwfNVBIUEKdekItt/jw5+Tq26cuxhJwg
uXoSQV6E0CYQCLdw9fyMmQfwZKMNQ42v1JUAFx48L0g8pF7AgMBAAGgggG1MBoG
CisGAQQBgjcNAgMxDBYKni4xLjc2MDEumjBwBgkrBgEEAYI3FRQxSTBHAGFEDBPM
WU5DTEFCMUVER0UuZw50cnVzdC5sb2NhbAwaTF1oQ0xBQjFFREdFXEFkbw1uaXN0
cmF0b3IMCkrlcGxveS1eGUwcyYkKwYBBAGCNw0CAjFkMGICAQEewgBNAGKAYwBy
AG8AcwBvAGYAdaAagAFIAUwBBACAAUwBDAGgAYQBuaG4AZQBsACAAQwByAHKACAB0
AG8AZwByAGEACAB0AGKAYwAgAFAACgBVAHYAaQBkAGUAcgMBADCBYgYJKoZIhvcCN
AQKOMYG8MIG5MA4GA1UdDwEB/wQEAWIE8DBCgNVHREEOZA5ghFzaXAUZw50cnVz
dC5sb2NhbIIPC21wLmVudHJ1c3QuY29tghN3ZwJjb25mLmVudHJ1c3QuY29tMAwG
A1UdEwEB/wQCMAAwIQYJKwYBBAGCNxQCBBQeEgBXAGUAYgBTAGUAcgB2AGUAcjAT
BgNVHSUEDDAKBggrBgEFBQCdATAdBgNVHQ4EFgQUKD1xfdwNtfJUzaJuf89P8irs
jqsWdQYJKoZIhvcNAQEFBQADggEBABJ1DeG8ciGYfnvobHK6w830Nhjdm1aPIjvd
ygf88pp2g/dSTYmthGezwzmQYPIgJOK1vrQJdx5TpEa5waw7kqGHYwGMM81Lys
dwT1/IDwFP12MqBRZFA4HHvbh7tb+CbwQI8ivwPayISGsgAa20oieo7imUZ0L1Lt
nkprvNhrAD9zi1ET22IYmXRLBI/3/67Hb2cQkt8Crn8bgZnu04013IfYOH4BABpC
56UDdDaOzIBcwaecKA0g6Zausic90Ijrxsep1YF21nI74gr9QzanZkJM3T80gZRN
zvNrBjwsJcqtAIFRMEWHOXNQx2R9IEeg4kyx0brcmVvoxbLOEUA=
-----END NEW CERTIFICATE REQUEST-----
```